



	PO address	P.O. BOX 242, BANYO QLD 4014
	Phone	3621 7333
	Fax	3621 7300
	Email	admin@earnshawsc.eq.edu.au
	Website	http://www.earnshawsc.eq.edu.au/

Principal's foreword

Introduction

The Annual School Report provides parents and the community with an overview of the achievements and highlights of Earnshaw State College for the 2008 academic year. This report includes summary information on our student achievements in the National Assessment Program, student retention rates, curriculum offerings and information relating to the professional work of our staff.

The Year 2008 was a year of significant change for Earnshaw State College. The College Review identified strengths and achievements within the College and areas for improvement and action. I was appointed as the new Principal of Earnshaw State College in August and the initial planning for renewal and improvement was undertaken. The first stage of the renewal plan focused on four priority areas :

1. Literacy and Numeracy
2. Professional Practice
3. Pastoral Care
4. Infrastructure

Literacy and Numeracy

The College undertook a comprehensive audit of literacy and numeracy results and practices. Recommendations from this audit resulted in the development of a new Literacy and Numeracy Strategy to be delivered in 2009. Earnshaw State College was identified as one of the 14 schools in Queensland with the highest level of improved literacy results for students in years 3, 5 and 7. The Earnshaw State College Literacy Strategy builds on this success.

Professional Practice

In semester 2, 2008 all College Staff engaged in and contributed to strategic and operational planning for curriculum renewal in 2009. The Professional Standards for Teachers and the priorities of the Queensland Curriculum and Assessment Framework underpin the action plan to deliver excellence in teaching practice across all year levels, Prep to Year 12.

Pastoral Care

In 2008 the College reviewed the Pastoral Care Program and the implementation of the College Behaviour Policy and Uniform Policy. Recommendations of the review focused on nurturing College culture and a sense of belonging and inclusion for all students.

Infrastructure

In 2008 significant planning and work was undertaken to enhance College Facilities. This included:

- Significant refurbishment in the Middle School classrooms
- Installation of interactive whiteboards throughout Middle School
- Refurbishment of the Pool Precinct (to be completed in 2009)
- Significant program of maintenance throughout the College
- New machinery in Manual Arts
- Initial planning of the College Sports Hall





Future outlook

Earnshaw State College is currently undertaking an exciting and rewarding College Renewal Program singularly focused on the future of our students. The centrepiece of this renewal is our new Curriculum Framework. Throughout 2009 our College teaching staff have engaged in significant research, professional development, consultation and planning to design and deliver a college curriculum that will position our students to achieve the goals and future they aspire to. Our new curriculum framework will be implemented in 2010. **The Earnshaw State College Curriculum** is developed within the context of **Education for a Sustainable Future**. Science and Environment, Economics and Community and Culture are the organising elements of the Curriculum. The actual framework includes focus years in Enterprise Learning, Intervention and Enrichment, Gender Based Learning and Pathways. The curriculum is supported through partnerships with the Australian Catholic University, The Narashino District in Japan and North Brisbane TAFE. This curriculum will be compliant with the National Curriculum when it is introduced in 20011.

A significant building program will support the implementation of our new curriculum. Our new College Sports Hall is completed. The federal government Building Education Revolution funding will deliver a new library resource centre and science/ technology centre for junior and middle school. Two new outdoor learning areas will also be developed and completed in the next 12 months. Interactive whiteboards will be installed in the Junior School and technology and classroom refurbishments will be undertaken in the Senior School and Special Education Program.



Our school at a glance

School Profile

Earnshaw State College is a co-educational College situated in Banyo with students from Prep to Year 12. During 2008 there was an enrolment of 690 students from P-12. Our students and their families enjoyed easy access to the College via train, bus and the Gateway Motorway.

Curriculum offerings

Our distinctive curriculum offerings

In 2008 Earnshaw State College undertook a review and consultation process to establish the future direction of the College in curriculum. The decision was made to underpin the core curriculum of the College with the priorities and values of Education for Sustainable Futures. The new College Curriculum Framework will focus the major elements of Sustainable Futures and incorporate the priorities of the National Curriculum. The first programs and partnerships were formed to promote understanding and commitment to the important agendas of environmental sustainability, culture and community and economic sustainability. Examples include:

A partnership between Earnshaw State College, Narashino District in Japan, Brisbane City Council and Nudgee Beach Environmental Centre was established to facilitate the Wader Birds Research Project.

An extension program was introduced in Third Term within the Year 9 Science Program. The focus of this program was "Water" which during our state's drought conditions was very relevant and topical. The program was implemented with program support from the Nudgee Beach Environmental Education Centre. This has been very successful with enhanced student learning and will be expanded into other year levels. It has also led to the Nudgee Beach Environmental Centre sponsoring an annual Award for students named the "*Nudgee Beach Environmental Centre Award*" for the Middle School Student who has demonstrated a keen interest, and shown strong support for environmental issues.

Year 3 Eco-Citizen online learning unit - Year 3 classes participated in a trial curriculum project for Education Queensland involving a series of online units of work related to the development of the values of an eco-citizen.

This initial work in Sustainable Futures has been extended in 2009 and will be further embedded throughout the P-12 Curriculum in 2010.

Below are listed a sample of the extra curricular activities undertaken by our students in 2008.

Student representation in RAMSAR Environmental Conference in Korea

Nudgee Wader Bird Research Project

College Awards Night

Graduation Ceremonies

The senior school ski trip

The year 12 formal

Senior induction

College Musical : Peter Panto

Australian Business Week National Competition

Athletics and swimming carnivals

Year 10 science Mythbusters

Interact and Student council cultural and fundraising activities e.g. 'free dress days' and Games

Arcade

Earnshaw 'ROAR' participants compete in curtain raiser to a QLD Roar game at Suncorp Stadium.

Senior Vocal Group performed at Open Day and St Oswald's Fete and Christmas Carols.

Junior Choir sang at Junior Assembly, St Oswald's Fete and Christmas Carols.

Success in the University of NSW Mathematics and English competitions

"Shine" program for Year 5 girls

Under Eight's week celebrations

Our school at a glance

Revved Up” anger management and conflict resolution program for Year 4 Boys.
Buddy programs: Year 7 students working on a buddy reading program with year 3.
Gardening Group: selected, planned and planted natives and vegetables. Focus on literacy, numeracy and social skills in a real-life context.
Cooking program: Focus on literacy, numeracy and social skills in a real-life context.
Brain Gym program and Social Skills program
Harmony Day - we celebrated Harmony Day, acknowledging the great diversity of cultures within our Australian and World community. Students from the Junior School wore clothing in the colour of a country's National flag to school.
Junior School Dance

How computers are used to assist learning

Earnshaw State College has used ICTs to assist learning by firstly improving levels of student access to computers. This has been reflected by a marked improvement in the college's computer to student ratio. Additionally, Earnshaw has made major advances in embedding ICTs into current curriculum programs, ensuring student exposure to technology in all learning areas and subjects. Finally, flexible e-learning initiatives have been introduced to various classes within the college. Students in year three have undertaken the “Eco-citizen” trial whereby students accessed online learning activities and multimedia learning experiences. Students within the Senior School have been utilizing “The Learning Place” and other online learning communities.

Social climate

It is the shared view of our College staff and community that school should be a sanctuary for all students to learn in a safe and caring environment - free to learn and enjoy their childhood and youth. Our Pastoral Care program within the College is significantly enhanced by the opportunities provided in a P-12 context.

We support our students through a firm but caring approach to instilling the values of respect, care and self discipline in all aspects of College life. In 2008 our chaplaincy program supported our students in many group and individual programs designed to promote self worth and trust. In addition, teachers undertook training to introduce the “You Can Do It” Program in 2009.

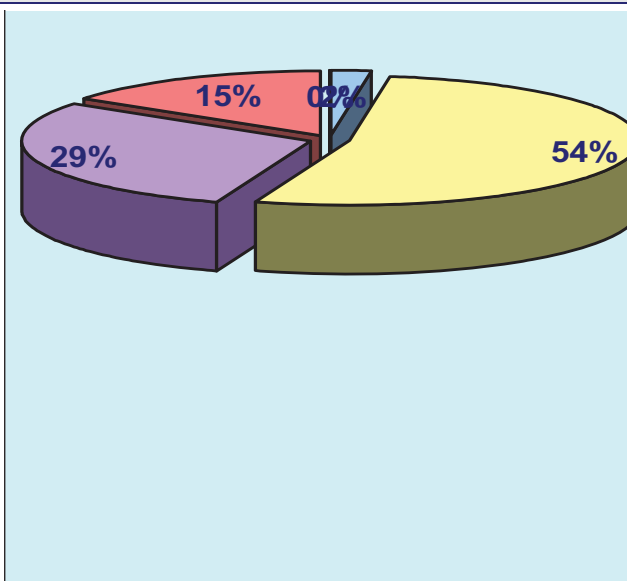
Involving parents in their child's education.

The Banyo community is a close knit and inclusive community. Our College is the local school and is well supported by our parents, local organisations and businesses. The College boasts a very supportive and active P&C. Dedicated volunteers contribute to our College priorities of preparedness and pride in College through our tuckshop, uniform shop and bookshop. A significant number of parents support student learning through volunteer work in classrooms, school excursions and special event days.

Performance of our students

Qualifications of all teachers.

Doctorate	0
Masters	2
Bachelor degree	45
Diploma	25
Certificate	13



The total funds expended on teacher professional development in 2008 were \$34800.

The major professional development initiatives are as follows:

- Literacy Training
- Numeracy Training
- Leadership Development
- Student Health and Welfare
- Workplace Health and Safety
- Subject specific professional development

The involvement of the teaching staff in professional development activities during 2008 was 85%.

Average staff attendance

For permanent and temporary staff and school leaders the staff attendance rate was 96% in 2008.

Proportion of staff retained from the previous school year.

From the end of the 2007 school year, 92 % of staff was retained by the school for the entire 2008 school year.

Student attendance

The average attendance rate as a percentage in 2008 was 91 %.

Performance of our students

Key outcomes

National Assessment Program – Literacy and Numeracy (NAPLAN) results - our reading, writing, spelling, grammar and punctuation, and numeracy results for the Years 3, 5, 7 and 9.

Domain	Measures		Yr 3	Yr 5	Yr 7	Yr 9
Reading	Average score for the school		370	460	532	535
	Average score for Queensland		371.1	466.1	528.1	568.2
	For the school the percentage of students at or above the national minimum standard.	2008	86 %	87 %	93 %	84 %
Writing	Average score for the school		392	467	512	529
	Average score for Queensland		391.8	468.9	522.7	555.3
	For the school the percentage of students at or above the national minimum standard.	2008	91 %	87 %	85 %	74 %
Spelling	Average score for the school		369	458	527	543
	Average score for Queensland		366.7	462.0	528.0	567.8
	For the school the percentage of students at or above the national minimum standard.	2008	89 %	92 %	91 %	74 %
Grammar and Punctuation	Average score for the school		348	479	497	557
	Average score for Queensland		370.4	476.6	518.0	563.2
	For the school the percentage of students at or above the national minimum standard.	2008	78 %	87 %	87 %	78 %
Numeracy	Average score for the school		358	459	525	538
	Average score for Queensland		367.9	458.2	539.0	570.7
	For the school the percentage of students at or above the national minimum standard.	2008	86 %	89 %	100 %	84 %

Results in the Year 2 Diagnostic Net

	Percentage of students not requiring additional support
Reading	73 %
Writing	74 %
Number	85 %

Apparent retention rates Year 10 to Year 12.

Year 12 student enrolment as a percentage of the Year 10 student cohort.	86 %
--	------

Outcomes for our Year 12 cohort of 2008

Number of students awarded a Senior Statement.	37
Number of students awarded a Queensland Certificate Individual Achievement	2
Number of students awarded a Queensland Certificate of Education	24

Performance of our students

Number of students awarded an International Baccalaureate Diploma	n/a
Number of students awarded one or more Vocational Education Qual.	14
Number of students who are completing or completed a School-based Apprenticeship	7
Number of students receiving an Overall Position (OP).	22
Percentage of OP/ IBD eligible students with OP 1-15 or an IBD.	68%
Percentage of Year 12 students who are completing or completed a SAT or awarded one or more of the following : QCE ,Vet Qual	73%
Percentage of Queensland Tertiary Admissions Centre (QTAC) applicants receiving an offer.	94%

Post-school destination information

At the time of publishing this School Annual Report, the results of the 2008 Year 12 post-school destinations survey, Next Step – Student Destination Report for the school were not available. Information about these post-school destinations of our students will be incorporated into this Report in September.

Value added

Earnshaw State College provides opportunities for students at all stages of their education to enrich and deepen their understanding of their community, their personal potential and the contribution they make to their College and community. To support our students in this area we involve them in a range of programs and activities. Examples include:

- Year 10 trip to UQ to experience the university environment
- Student visits to the Australian Catholic University
- Year 11 students attendance at Queensland Young Leaders Convention
- Year 10 early childhood students working in the preparatory year program
- District and regional representation in sport
- Music performances at community events eg Anzac Day, Exhibition
- Students gaining school based apprenticeships and traineeships
- International partnership and visiting programs with Narahsino, Japan to study and research environmental protection for endangered species.
- Australian Business Week Award Program at National level
- Annual Senior School Ski Trip
- College Camping Program

Our students have achieved significant success in all levels of the programs and activities listed. Each year we are extending our involvement in activities that broaden and extend our students learning experiences.

Parent, student and teacher satisfaction with the school

90% of surveyed parents maintained that their child works well at the College and is happy to go to this school and over 80% agreed that their child was receiving a good education at the College. Over 90% of parents also expressed satisfaction in the development of their child's social skills. 87% of parents were satisfied with the curriculum offerings at the College. Teachers expressed satisfaction with the relationships in the College and with their work contribution in the College. Students expressed satisfaction with the learning climate in the College and the interest teachers take in their progress.